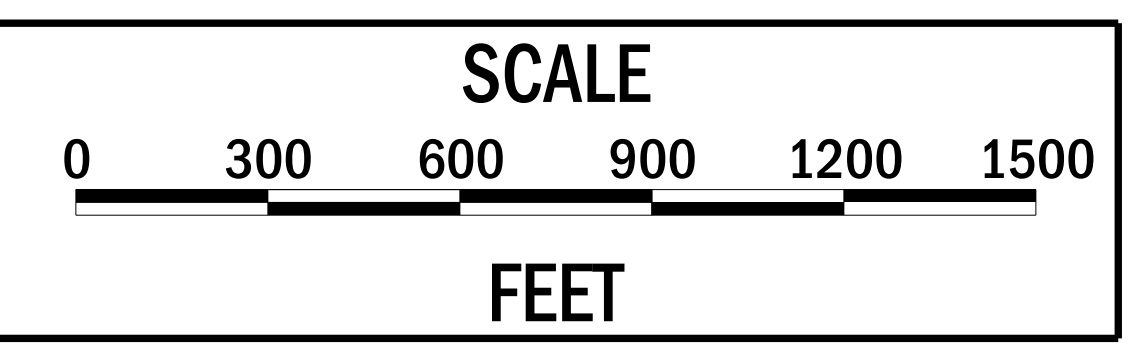
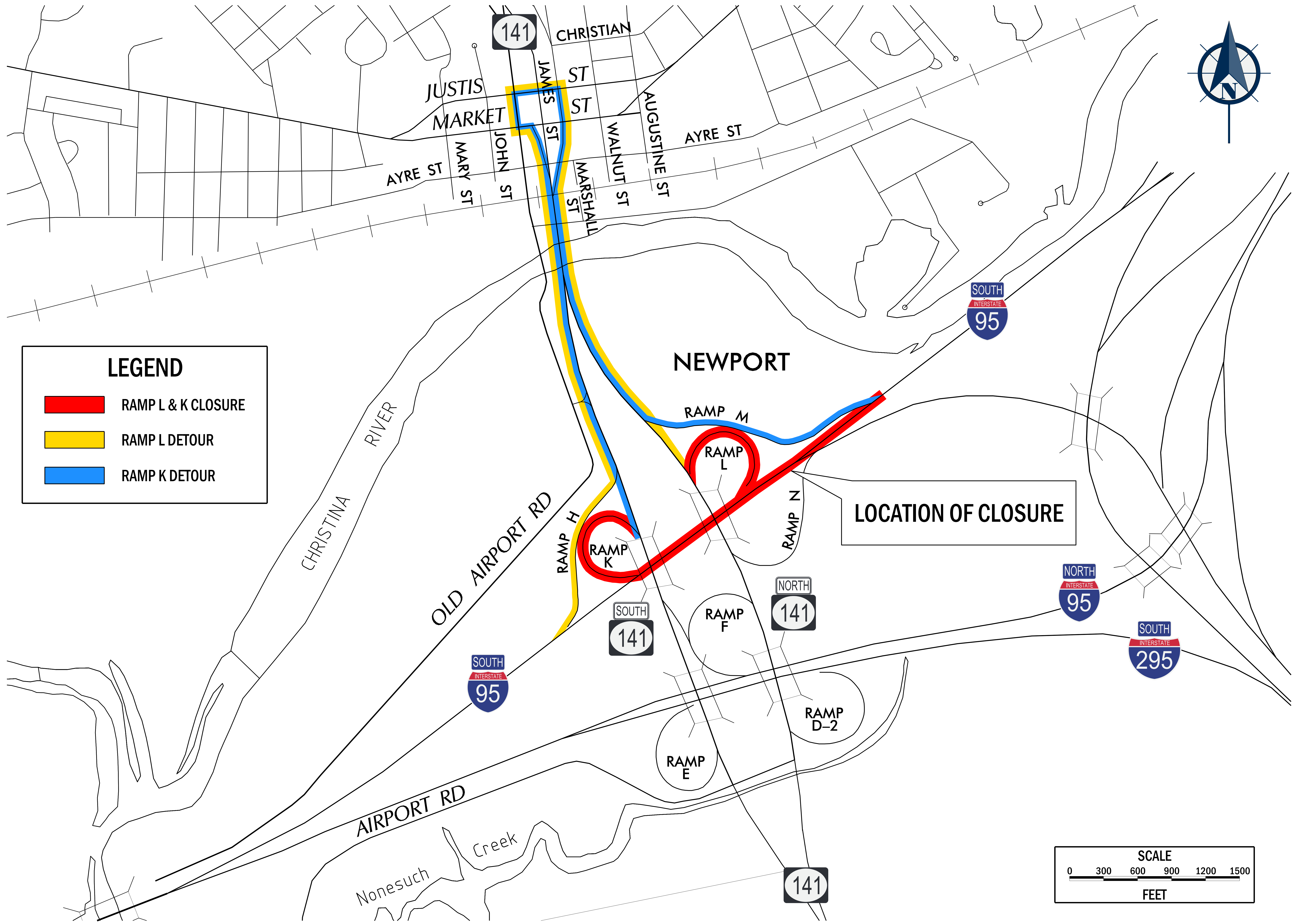
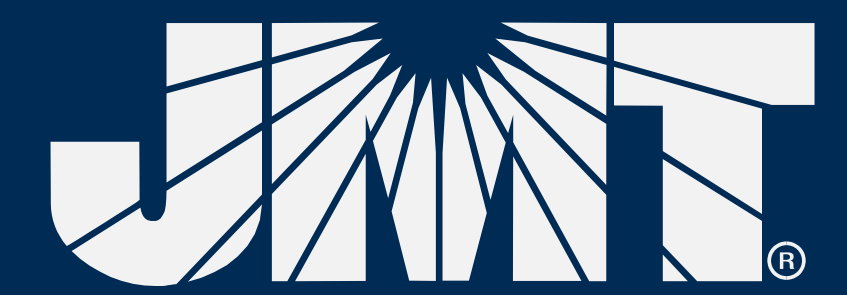


SR 141 IMPROVEMENTS, I-95 INTERCHANGE TO JAY DRIVE

DETOUR PLAN A RAMP L & K CLOSED



DATE: 6/15/2020
FILE: LOCATION\0\SR141\06272-01\SR141_DETOUT_PLAN_A_RAMP_L_K_CLOSED.dwg
PLOT: SR141_DETOUT_PLAN_A_RAMP_L_K_CLOSED

SR 141 IMPROVEMENTS, I-95 INTERCHANGE TO JAY DRIVE - DETOUR PLAN A RAMP L & K CLOSED - JUNE 2020

JUNE 2020